



● Indicator Series LEDs-----SHULIGHT® Special Shape LED Series

Part Number	Chip Material	Lens Type	Emitting Color	Forward Voltage (V)		Dominant Wavelength	Luminous Intensity (mcd)		Reverse Current (μA)	Viewing Angle (deg)
				TYI	MA	TYP(nm)	MIN	MA	MAX	2 / 2
➤ Φ3*4.8mm V Shape LED with Face Gap										
SLL-R7V03B-1A	GaAsP/GaP	Color Tran.	High Bright Red	2.1	2.5	625	25	35	10	180
(Test condition) 测试条件				IF=10mA/VR=5V						
SLL-B6V03C	GaN/SiC	Water Clear	Ordinary Bright Blue	3.8	4.2	460	5	15	100	180
SLL-B7V03C-1B	GaN/SiC	Water Clear	High Bright Blue	3.3	4.0	460	15	25	100	180
(Test condition) 测试条件				IF=20Ma/VR=5V						
Part Number	Chip Material	Lens Type	Emitting Color	Forward Voltage (V)		Dominant Wavelength	Luminous Intensity (mcd)		Reverse Current (μA)	Viewing Angle (deg)
				TYI	MA	TYP(nm)	MIN	MA	MAX	2 / 2
➤ Φ5*6.8mm V Shape LED										
SLL-V6V05D	InGaN	White Diff.	Ordinary Bright Verdant	3.3	4.0	525	100	130	100	180
SLL-V6V05C	InGaN	Water Clear	Ordinary Bright Verdant	3.5	4.2	515	400	800	100	130
SLL-B6V05C-1A	GaN/SiC	Water Clear	Ordinary Bright Blue	3.3	4.0	460	15	35	100	180
SLL-B7V05C-1D	GaN/SiC	Water Clear	Ordinary Bright Blue	3.3	4.0	465	140	220	100	120
(Test condition) 测试条件				IF=20mA/VR=5V						
➤ Φ1.8*1.4&2.4*3.4*3.1mm Tower Shape Long Lead LED										
SLL-G7T03A-1C	GaP	Water Clear	High Bright Green	2.1	2.5	570	15	25	10	60
(Test condition) 测试条件				IF=10mA/VR=5V						
SLL-Y9T05C-1B	AlGaInP	Water Clear	Ultra Bright Yellow	2.0	2.5	590	800	1000	10	50
(Test condition) 测试条件				IF=20mA/VR=5V						



厦门市曙光电子科技有限公司

Xiamen Shulight Optoelectronic Technology Co., Ltd.

ADD: No. 180 Building Road Nanshan, Huli Industrial Zone, Xiamen 361006, China

TEL: +86-592-5659669 FAX: 86-5639450 E-mail: sales@slt-led.com <http://www.slt-led.com>

Part Number	Chip Material	Lens Type	Emitting Color	Forward Voltage (V)		Dominant Wavelength	Luminous Intensity (mcd)		Reverse Current (μA)	Viewing Angle (deg)
				TYI	IA>	TYP(nm)	MIN	IA>	MAX	/2
➤ Φ2.1*2.6&2.8*3.5*2.7mm Tower Shape LED with Long Lead										
暂无图片										
SLL-R7T34A-1A	GaP	Color Diff.	High Bright Red	1.8	2.5	630	7.0	9.0	10	100
(Test condition) 测试条件				IF=10mA/VR=5V						
➤ 2.0*2.0&2.0*3.7*2.9mm Teat Shape LED with Long Lead										
暂无图片										
SLL-R7T24A-1A	GaP	Color Diff.	High Bright Red	1.8	2.5	630	13	19	10	25
SLL-Y7T24B	InAsP/GaP	Color Tran.	High Bright Yellow	2.0	2.5	590	80	120	10	20
(Test condition) 测试条件				IF=10mA/VR=5V						
❖ Columnar Shape Series LED										
➤ Φ3*6.1mm Short Lead LED with Flat Head										
SLLR7C03C-1A	GaP	Water Clear	High Bright Red	1.7	2.5	630	10	20	10	20
(Test condition) 测试条件				IF=10mA/VR=5V						
SLL-B7C03A-1A	GaN/SiC	Color Diff.	High Bright Blue	3.8	4.2	465	50	80	10	130
SLL-B7C03C-1C	GaN/SiC	Water Clear	High Bright Blue	3.3	4.0	465	90	130	100	100
(Test condition) 测试条件				IF=20mA/VR=5V						



厦门市曙光电子科技有限公司

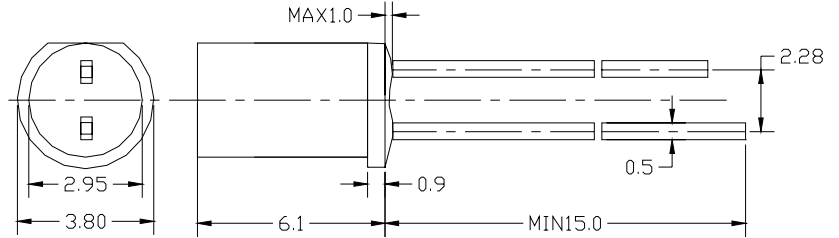
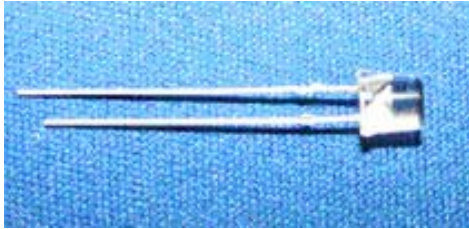
Xiamen Shulight Optoelectronic Technology Co., Ltd.

ADD: No. 180 Building Road Nanshan, Huli Industrial Zone, Xiamen 361006, China

TEL: +86-592-5659669 FAX: 86-5639450 E-mail: sales@slt-led.com <http://www.slt-led.com>

Part Number	Chip Material	Lens Type	Emitting Color	Forward Voltage (V)		Dominant Wavelength (nm)	Luminous Intensity (mcd)		Reverse Current (μA)
				TYI	IA>		YP	MIN	

➤ **Φ5*5.75mm Long Lead LED with Flat Head**



SLL-R7C05A-1A	GaP	Color Diff.	High Bright Red	1.8	2.5	630	20	35	10	70
SLL-G7C05A-1A	GaP	Color Diff.	High Bright Green	2.1	2.5	570	15	25	10	70
SLL-G7C05C-1A	GaP	Water Clear	High Bright Green	2.1	2.5	570	20	30	10	40

(Test condition) 测试条件

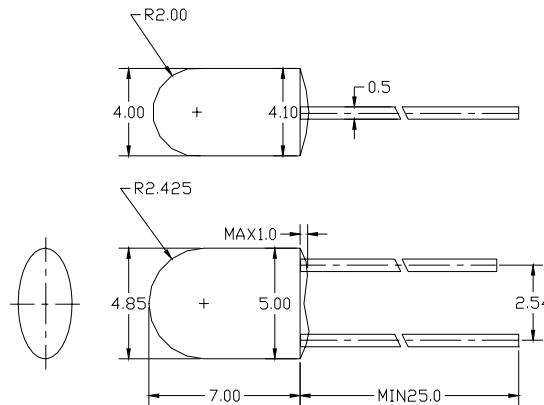
IF=20mA/VR=5V

SLL-R9C05C-1C	GaAsP/GaP	Water Clear	Ultra Bright Red	2.0	2.5	625	180	220	10	70
SLL-R9C05C-1E	GaAsP/GaP	Water Clear	Ultra Bright Red	2.0	2.5	625	150	200	10	80
SLL-R9C05D-1A	GaAsP/GaP	White Diff.	Ultra Bright Red	2.0	2.5	625	130	170	10	90
SLL-Y9C05C-1A	AlGaInP	Water Clear	Ultra Bright Yellow	2.1	2.5	590	100	150	10	80
SLL-B7C05C-1A	InGaIn	Water Clear	High Bright Blue	3.0	4.0	470	300	350	100	60
SLL-B7C05D-1B	InGaIn	White Diff.	High Bright Blue	3.0	4.0	470	200	250	100	70

(Test condition) 测试条件

IF=20mA/VR=5V

➤ **Φ5*7.00mm Ellipse Shape LED**



SLL-G7E05A-1B	GaP	Color Diff.	High Bright Green	2.1	2.5	570	100	150	10	40
---------------	-----	-------------	-------------------	-----	-----	-----	-----	-----	----	----

(Test condition) 测试条件

IF=10mA/VR=5V

SLL-R9E05C-1D	AlGaInP	Water Clear	Ultra Bright Red	2.0	2.5	625	800	1200	10	20
SLL-V9E05A-1A	InGaIn	Color Diff.	Ultra Bright Verdant	3.3	4.0	525	1300	1900	100	30
SLL-V9E05C-1B	InGaIn	Water Clear	Ultra Bright Verdant	3.2	4.0	525	3200	4200	100	20
SLL-B9E05C-1A	InGaIn	Water Clear	Ultra Bright Blue	3.5	4.0	470	1500	2100	100	20

(Test condition) 测试条件

IF=20mA/VR=5V



厦门市曙光电子科技有限公司

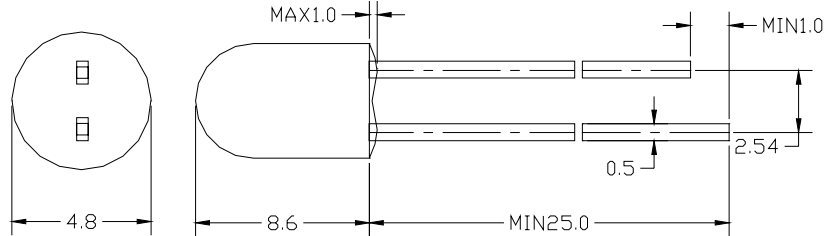
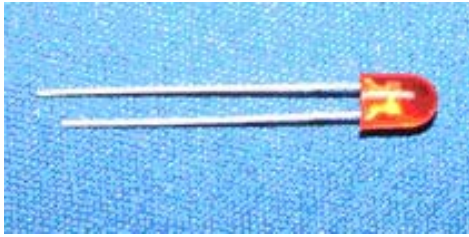
Xiamen Shulight Optoelectronic Technology Co., Ltd.

ADD: No. 180 Building Road Nanshan, Huli Industrial Zone, Xiamen 361006, China

TEL: +86-592-5659669 FAX: 86-5639450 E-mail: sales@slt-led.com <http://www.slt-led.com>

Part Number	Chip Material	Lens Type	Emitting Color	Forward Voltage (V)		Dominant Wavelength (nm)	Luminous Intensity (mcd)		Reverse Current (μA)	
				TYI	VA		MIN	MAX	2	/2

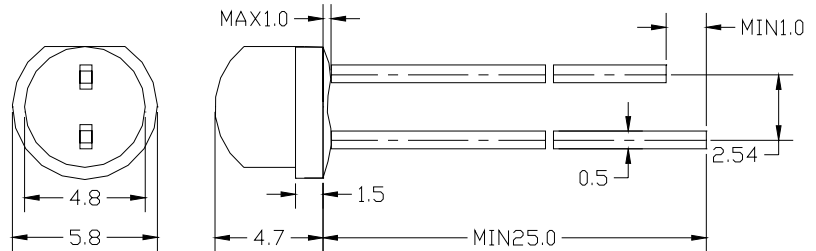
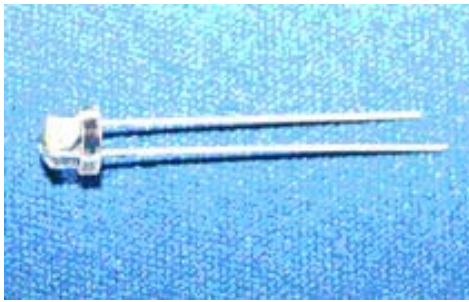
Φ5*8.6mm Round Long Lead LED without Flange



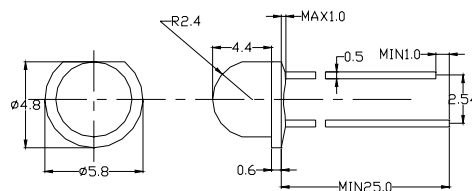
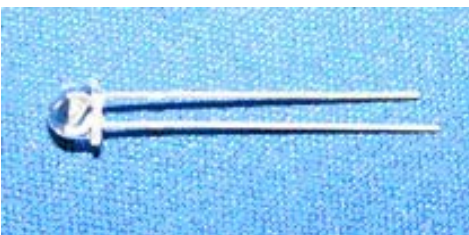
SLL-R9E05C-1A	AlGaInP	Water Clear	Ultra Bright Red	2.1	2.5	630	800	1200	10	20
SLL-R9E05C-1L	AlGaInP	Water Clear	Ultra Bright Red	2.0	2.5	625	800	1200	10	30
SLL-V9E05C-1N	InGaN	Water Clear	Ultra Bright Verdant	3.1	4.0	530	10000	15000	100	20
SLL-B9E05C-2F	InGaN	Water Clear	Ultra Bright Blue	3.6	4.0	470	2000	3000	100	10
SLL-W9E05C-1C	InGaN	Water Clear	Ultra Bright White	3.2	4.0	--	3000	4000	100	10
(Test condition) 测试条件				IF=20mA/VR=5V						

Straw hat Shape Series LED

Φ5*4.7mm Round Wide Angle LED with Flange



SLL-R9H05C-1F	AlGaInP	Water Clear	Ultra Bright Red	2.0	2.5	625	200	350	10	80
SLL-R9H05C-1Q	AlGaInP	Water Clear	Ultra Bright Red	2.1	2.5	645	400	600	10	120
SLL-V9H05C-1F	InGaN	Water Clear	Ultra Bright Verdant	3.3	4.0	525	400	600	100	80
SLL-V9H05C-1M	InGaN	Water Clear	Ultra Bright Cyan	3.3	4.0	500	500	700	100	120
SLL-B9H05C-1B	InGaN	Water Clear	Ultra Bright Blue	3.3	4.0	470	100	200	100	80
SLL-B9H05C-1D	GaN/SiC	Water Clear	Ultra Bright Blue	3.2	4.0	465	300	500	100	120
(Test condition) 测试条件				IF=20mA/VR=5V						





厦门市曙光电子科技有限公司

Xiamen Shulight Optoelectronic Technology Co., Ltd.

ADD: No. 180 Building Road Nanshan, Huli Industrial Zone, Xiamen 361006, China

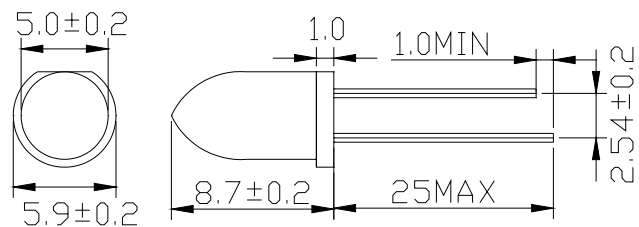
TEL: +86-592-5659669 FAX: 86-5639450 E-mail: sales@slt-led.com <http://www.slt-led.com>

SLL-R9H05C-1K	AlGaInP	Water Clear	Ultra Bright Red	2.0	2.5	625	350	450	10	60
SLL-R9H05C-1S	AlGaInP	Water Clear	Ultra Bright Red	2.0	2.5	625	200	300	10	120
SLL-V9H05C-1I	InGaN	Water Clear	Ultra Bright Verdant	3.2	4.0	525	1600	2000	100	60
SLL-B7H05C-1B	InGaN	Water Clear	High Bright Blue	3.2	4.0	475	300	400	100	60
SLL-B7H05D/518	GaN/SiC	White Diff.	High Bright Blue	3.8	4.2	460	50	100	100	40
(Test condition) 测试条件				IF=20mA/VR=5V						
➤ Φ5*4.4mm Round Wide Angle LED with Flange										

Bullet Shape Series LED

Part Number	Chip Material	Lens Type	Emitting Color	Forward Voltage (V)		Forward Voltage (V)		Dominant Wavelength		Luminous Intensity (mcd)	Reverse Current (μA)
				TYPE	MAX	TYPE(nm)	MIN	MAX	MAX	2 / 2	

➤ Φ5*4.7mm Round Wide Angle LED with Flange



SLL-R9B05C-1J	AlGaInP	Water Clear	Ultra Bright Red	2.1	2.5	635	6000	...	10	10
SLL-R9B05C-2A	AlGaInP	White Diff.	Ultra Bright Red	2.0	2.5	630	7500	...	10	5
SLL-R9B05C-2L	AlGaInP	Water Clear	Ultra Bright Red	2.1	2.5	625	5000	15000	10	10
SLL-A9B05C-1C	AlGaInP	Water Clear	Ultra Bright Amber	2.0	2.5	605	5000	...	10	10
SLL-A9B05C-1J	AlGaInP	Water Clear	Ultra Bright Amber	2.0	2.5	600	7500	...	10	5
SLL-A9B05C-2D	AlGaInP	Water Clear	Ultra Bright Amber	2.0	2.5	610	5000	15000	10	10
SLL-Y9B05A	AlGaInP	Color Diff.	Ultra Bright Yellow	2.1	2.5	585	6000	18000	10	10
SLL-Y9B05C-2I	AlGaInP	Water Clear	Ultra Bright Yellow	2.0	2.5	590	7500	...	10	10
SLL-Y9B05C-3C	AlGaInP	Water Clear	Ultra Bright Yellow	2.1	2.5	595	5000	15000	10	10
SLL-V9B05C-1A	InGaN	Water Clear	Ultra Bright Verdant	3.3	4.0	520	7500	...	100	10
SLL-V9B05C-1E	InGaN	Water Clear	Ultra Bright Verdant	2.8	4.0	525	11000	...	100	5
SLL-V9B05C-2I	InGaN	Water Clear	Ultra Bright Verdant	3.4	4.0	525	9000	...	100	10
SLL-B9B05C-1C	InGaN	Water Clear	Ultra Bright Blue	3.2	4.0	460	5000	...	100	10
SLL-B9B05C-2H	GaN/SiC	Water Clear	Ultra Bright Blue	3.2	4.0	465	4000	15000	100	10
SLL-W9B05C-1B	InGaN	Water Clear	Ultra Bright White	3.2	4.0	--	7500	...	100	15
SLL-W9B05C-2D	InGaN	Water Clear	Ultra Bright White	3.3	4.0	--	10000	...	100	10
SLL-W9B05D	InGaN	White Diff.	Ultra Bright White	3.2	4.0	--	4000	12000	100	10
(Test condition) 测试条件				IF=20mA/VR=5V						

Notes: The above is part of 3mm round LEDs we have produced. The datum are only for your reference, we can custom as your demand..